

BALCONY MOUNTING SYSTEM

Installation & Maintenance Manual



SolarV GmbH
Am Kronberger Hang 2, 65824 Schwalbach am Taunus,
Hessen Deutschland

Tel: +49 (0) 61969076877
Email: info@solarv.de
www.solarv.de



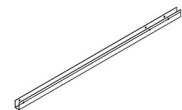
SECTION 1 – INSTRUCTIONS FOR PROTECTION

WARNING

- The balcony mounting system should be far away from flammable substances. The installer shall: Prevent fire near flammable or flammable goods.
- When the fire has happened, you must first ensure the safety of the aluminum parts if allowed. The subsequent should be installed after inspection by a professional.
- The parts of the system have been treated superficially, so damage must be avoided during installation and transport.
- During installation, ensure the correct installation sequence, position and procedure, or the damage may have happened.
- The connection of components should always be kept in good condition to avoid slipping and damage.
- To prevent personal injury, the installer must take preventive measures before installation.
- In order to prevent problems and accidents, assembly work must follow the instructions manual.
- Do not install or operate the system if it is destroyed or contains too few components.
- Installers should take care of their own safety during installation and troubleshooting and falling objects to avoid injury or bruising.
- Ice, snow and dew on the surface of components should be removed before installation are disposed of on condition that their coatings are not destroyed.
- The friction surface of the screws should be cleaned before installation. No dirt such as e.g. droplets, mud or greasy dirt.

SECTION 2 – INTRODUCTION OF THE BALCONY MOUNTING SYSTEM

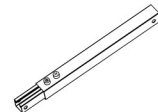
Bill of Material



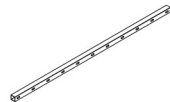
Main post×2



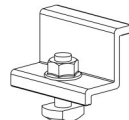
Sub post×2



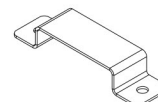
Telescopic rod×2



Cross arm×1

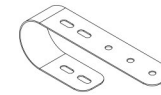


Clamp×4

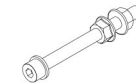


Hoop×2

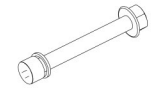
Anzeige und Anzahl der Teile



Hook×2



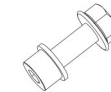
Screw set 6×M8*90



Screw set 8×M8*50



Casing pipe×2



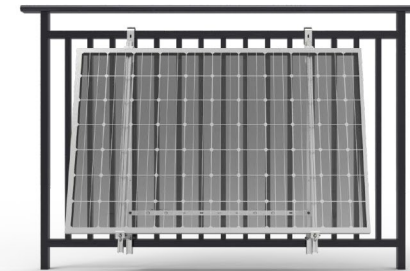
Screw set 8×M8*20



Screw set 2×M8*25

Anzeige und Anzahl der Teile

Effect Drawing



Front View



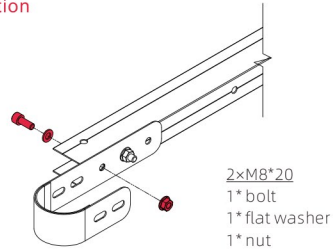
Rear View



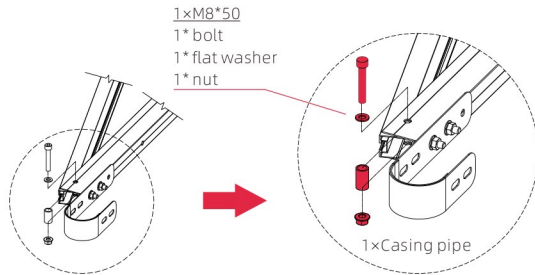
Side view

SECTION 3 – INSTALLATION PROCEDURES

Hook Installation

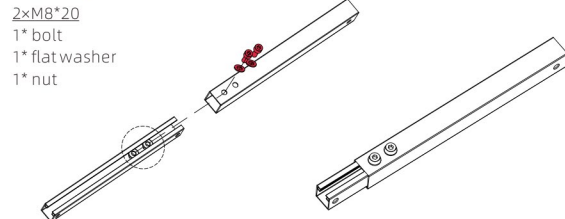


The Main post and Sub post Installation

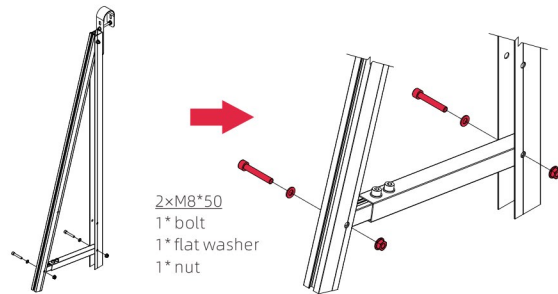


At the connection between the main post and the sub post, use a set of M8 * 50 bolt through the casing pipe.

The Telescopic Rod Installation

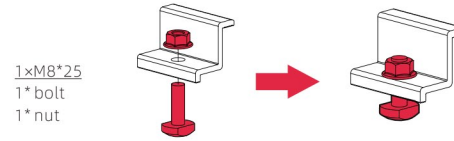


The nut can slide in the guide rail to select the appropriate length to determine the angle of the rack

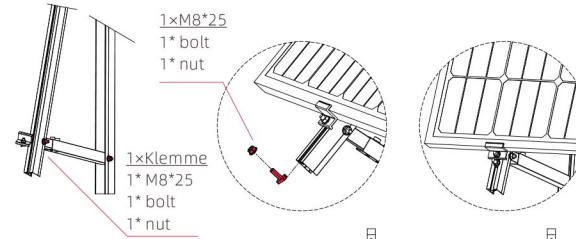


Install the telescopic rod on the main post and sub post with M8 * 50 bolt set.

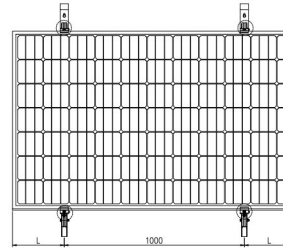
The Module Installation



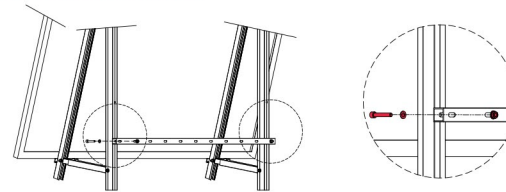
- Install the clamp at the bottom of the sub post to prevent the module from sliding.
- Install a group of bolts next to the lower side of the clamp to tighten the clamp to prevent slipping.



- Place the module on the sub post, fix it around with clamp.
- The post shall be uniformly arranged, and the position is shown in the below figure.

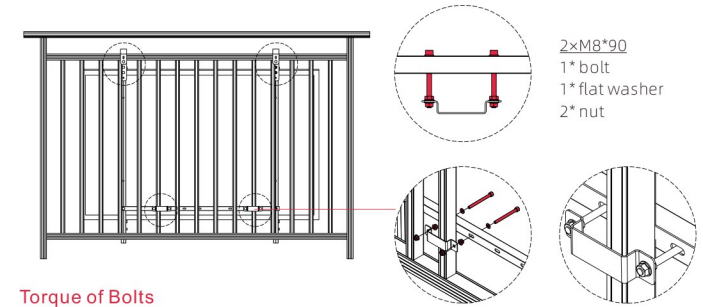
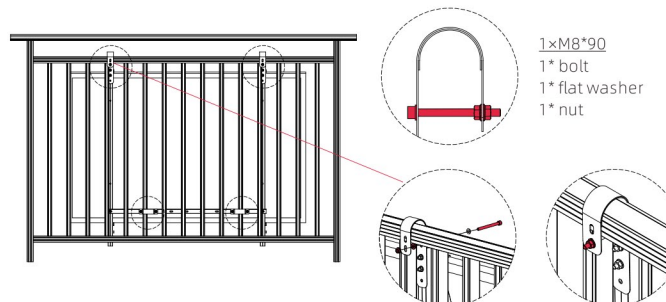


The Cross Arm Installation



- The cross arm can increase the stability of the tripod and install the inverter on it.
- Connect the cross arm to the main post through the M8*50 screw set.

Installation des Bügels und des Hakens.



Torque of Bolts

Bolt	Torque(N*m)
M8*20	8-10
M8*25	8-10
M8*50	8-10
M8*90	8-10

SECTION 4 – FINAL ASSEMBLY PROCESS

Tips for bolt installation

*Precautions for technical installation dimensions.

The specific size of technical installation depends on the technical design drawings. This installation manual is only applicable to explain the installation method of the product.

*Precautions when installing stainless steel fasteners.

Reduce friction coefficient:

1. Ensure that the thread surface is clean (for example, free of sand and dirt);
2. It is recommended to apply water wax or add lubricant (e.g. butter, 40 # engine oil);

Correct operation method:

1. It must be tightened perpendicular to the thread axis Tendentious;
2. During tightening, the force must be uniform and tightened .The torque shall not exceed the specified safety torque value;
3. Use torque wrench or socket wrench as often as possible to avoid using adjustable wrench or electric wrench; if you use an electric wrench, try to slow down.
4. Avoid using at high temperatures, do not turn quickly when using.

Check after installation

It must check the condition of all components and parts after completion of assembly or fixed assembly;

- *Check for damage.
- *Check if anything is forgotten during assembly.
- *Check that all bolts are securely closed.
- *Check whether all assembled modules match.
- *Clean the construction site after assembly.

Warning: Before wiring, the structural condition of the installed system must be checked. Before construction of junction box and other electrical equipment to be installed .The fixing system must be confirmed by the technician.

Daily maintenance

In order to ensure the reliable operation of the PV support and improve the safety of the equipment, a daily registration and inspection system is established in the daily operation and maintenance work.

Daily inspection items list (example table)

Item	Content	Time	Result
Clamp	Whether the clamps are loose		Checked exception
			Check normal
Connector	Whether the bolts are loose		Checked exception
			Check normal
Stand	Whether the stand components are deformed		Checked exception
			Check normal

Warning: The mounting system is installed on the original building railing structure. In addition to the regular maintenance of the mounting structure, the user must also check and maintain the railing structure at the same time to ensure the safe operation of the whole system structure.